

# MEMORY CARD GAME



BARLEY



BARLEY



Disney · PIXAR  
**ONWARD**  
IN CINEMAS APRIL 2

FOLD

0104

Have an adult help you cut out the cards along the dashed lines. DO NOT CUT SOLID GRAY LINES. After all the cards are cut out, fold along the gray lines and secure with tape or non-toxic glue.

**To Play:** Place the cards character side down and mix them up. Turn over two cards at a time to see if they match. If they don't, turn the cards face down again. Take turns turning over cards using your memory to recall where a matching card may be found. The person who matches the most pairs wins!

0104

IN CINEMAS APRIL 2

**ONWARD**  
Disney · PIXAR

IN CINEMAS APRIL 2

**ONWARD**  
Disney · PIXAR

IAN



IAN



Disney · PIXAR  
**ONWARD**  
IN CINEMAS APRIL 2

FOLD

Check the Classification

©Disney/Pixar

# MEMORY CARD GAME



LAUREL



LAUREL



Disney · PIXAR  
**ONWARD**  
IN CINEMAS APRIL 2

FOLD

0103

Have an adult help you cut out the cards along the dashed lines. DO NOT CUT SOLID GRAY LINES. After all the cards are cut out, fold along the gray lines and secure with tape or non-toxic glue.

To Play: Place the cards character side down and mix them up. Turn over two cards at a time to see if they match. If they don't, turn the cards face down again. Take turns turning over cards using your memory to recall where a matching card may be found. The person who matches the most pairs wins!

IN CINEMAS APRIL 2  
**ONWARD**  
Disney · PIXAR

IN CINEMAS APRIL 2  
**ONWARD**  
Disney · PIXAR

0101

COREY



COREY



Disney · PIXAR  
**ONWARD**  
IN CINEMAS APRIL 2

FOLD

Check the Classification

©Disney/Pixar

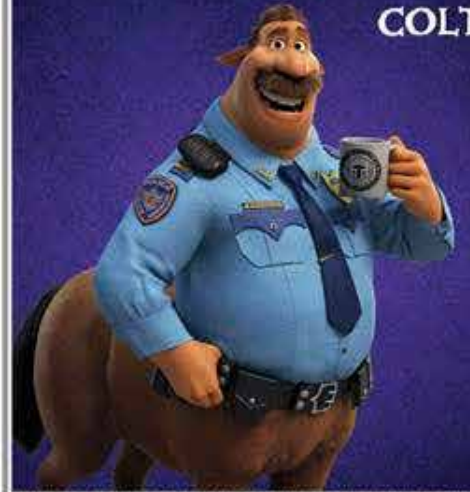
# MEMORY CARD GAME



COLT



COLT



Disney · PIXAR  
**ONWARD**  
IN CINEMAS APRIL 2

FOLD

d104

Have an adult help you cut out the cards along the dashed lines. **DO NOT CUT SOLID GRAY LINES.** After all the cards are cut out, fold along the gray lines and secure with tape or non-toxic glue.

**To Play:** Place the cards character side down and mix them up. Turn over two cards at a time to see if they match. If they don't, turn the cards face down again. Take turns turning over cards using your memory to recall where a matching card may be found. The person who matches the most pairs wins!

IN CINEMAS APRIL 2  
**ONWARD**  
Disney · PIXAR

IN CINEMAS APRIL 2  
**ONWARD**  
Disney · PIXAR

d104

BLAZEY



BLAZEY



Disney · PIXAR  
**ONWARD**  
IN CINEMAS APRIL 2

FOLD

Check the Classification

©Disney/Pixar

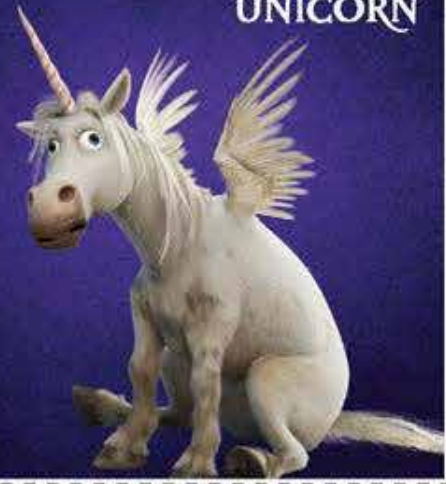
# MEMORY CARD GAME



UNICORN



UNICORN



Disney · PIXAR  
**ONWARD**  
IN CINEMAS APRIL 2

FOLD

0104

Have an adult help you cut out the cards along the dashed lines. DO NOT CUT SOLID GRAY LINES. After all the cards are cut out, fold along the gray lines and secure with tape or non-toxic glue.

**To Play:** Place the cards character side down and mix them up. Turn over two cards at a time to see if they match. If they don't, turn the cards face down again. Take turns turning over cards using your memory to recall where a matching card may be found. The person who matches the most pairs wins!

IN CINEMAS APRIL 2

**ONWARD**  
Disney · PIXAR

IN CINEMAS APRIL 2

**ONWARD**  
Disney · PIXAR

0104

WILDEN



WILDEN



Disney · PIXAR  
**ONWARD**  
IN CINEMAS APRIL 2

FOLD

Check the Classification

©Disney/Pixar

# MEMORY CARD GAME



BARLEY AND IAN



BARLEY AND IAN



Disney · PIXAR  
**ONWARD**  
IN CINEMAS APRIL 2

FOLD

FOLD

Have an adult help you cut out the cards along the dashed lines. DO NOT CUT SOLID GRAY LINES. After all the cards are cut out, fold along the gray lines and secure with tape or non-toxic glue.

**To Play:** Place the cards character side down and mix them up. Turn over two cards at a time to see if they match. If they don't, turn the cards face down again. Take turns turning over cards using your memory to recall where a matching card may be found. The person who matches the most pairs wins!

FOLD

IN CINEMAS APRIL 2

**ONWARD**  
Disney · PIXAR

IN CINEMAS APRIL 2

**ONWARD**  
Disney · PIXAR

GUINEVERE



Disney · PIXAR  
**ONWARD**  
IN CINEMAS APRIL 2

FOLD

Check the Classification

©Disney/Pixar

GUINEVERE



# MEMORY CARD GAME



SPRITES



SPRITES



Disney · PIXAR  
**ONWARD**  
IN CINEMAS APRIL 2

FOLD

FOLD

Have an adult help you cut out the cards along the dashed lines. DO NOT CUT SOLID GRAY LINES. After all the cards are cut out, fold along the gray lines and secure with tape or non-toxic glue.

**To Play:** Place the cards character side down and mix them up. Turn over two cards at a time to see if they match. If they don't, turn the cards face down again. Take turns turning over cards using your memory to recall where a matching card may be found. The person who matches the most pairs wins!

FOLD

IN CINEMAS APRIL 2

**ONWARD**  
Disney · PIXAR

IN CINEMAS APRIL 2

**ONWARD**  
Disney · PIXAR

BARLEY AND IAN



Disney · PIXAR  
**ONWARD**  
IN CINEMAS APRIL 2

FOLD

Check the Classification

©Disney/Pixar

BARLEY AND IAN

